

AQUAREAD

Multiparameter Water Quality Instruments



AP-2000

AQUAPROBE

Portable multiparameter water quality testing instrument

Standard Parameters:

pH, ORP, Optical DO, EC, Salinity, Resistivity,
TDS, SSG, & Temperature.

3 Easy options:

1. With or without Depth?
2. Which ISE electrode?
3. Which Optical electrode?

ISE Electrodes:

Ammonium & Ammonia,
Calcium, Fluoride,
Chloride, Nitrate.

Optical Electrodes:

Turbidity, Rhodamine,
Chlorophyll, Fluorescein,
Blue Green Algae, Refined Oil.

Mechanical Specification

Protection Class	IP68 (permanent immersion)
Immersion Depth	Min 75mm. MAX 30M
Operating Temperature	-5 °C - +50 °C
Dimensions (L x Dia)	290mm x 42mm
Weight	700



The AP-2000 Sockets, pH/ORP,
1 x ISE and 1 x Optical



Fully loaded
AP-2000



PROBE FEATURES

- Only probe to measure Turbidity, Optical DO, EC, pH, ORP, Depth, Temperature and ISE, at the same time, in a diameter under 2"
- Probe size makes it ideal for portable use within our rugged carry case
- It is made from marine grade anodised aluminium to withstand all environments
- Probe now features the rugged, metal AquaConn connectors for greater strength and protection
- AP-2000 can be used with a range of extension cable lengths that feature our AquaConn connectors. The cables are made to last on the outside and on the inside. All Extension cables contain our new KevlarCore; Internal strands of Kevlar that run the length of the cable to provide extra tensile strength, meaning there is no need for messy external support cables



AP-2000 AquaConn probe connection



AP-2000 mated AquaConn connector and Kevlarcore extension cable

- The AP-2000 allows you to add 1 ISE electrode and 1 optical electrode, you can choose from the large range of sensors available, swap and change as you please. There is also the option to add 2 ISE, email the team for more details



Large range of exchangeable electrodes available for use in the AP-2000

AM-200

AQUAMETER

Recording your water quality data and its GPS coordinates



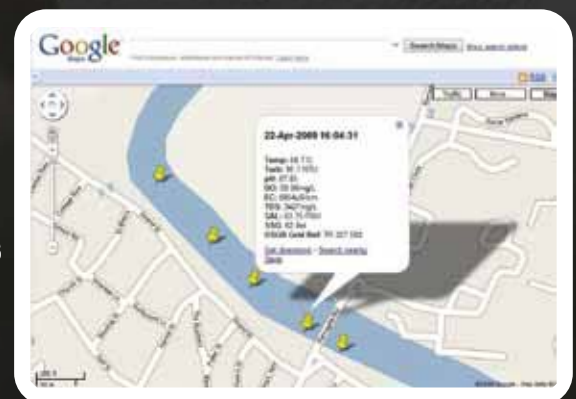
Mechanical Specification

Dimensions (W x H x D)	90mm x 180mm x 39mm	Atmospheric Pressure	Protection Class
Weight (inc. batteries)	in 75mm. MAX 30M	PC interface	Protection Class
Display	-5 °C - +50 °C	Power Supply	Protection Class
Data Memory	290mm x 42mm	Operating Temperatures	Protection Class
GPS Receiver	700	Protection Class	Protection Class

Record your dataset and your precise location with built in GPS



Google Earth and
Google Maps images
showing data locations



METER FEATURES

Rugged metal AquaConn connectors that won't let you down in the field



- Built in GPS receiver enables location tagging with every dataset, view data in Google Earth
- Display of all the parameters being measured; scroll left and right to view
- Record your dataset at the touch of a single button, including all parameters, GPS data and calibration data
- Built in air pressure sensor for atmospheric compensation
- Ergonomic curved design sits nice in the hand, with rubber gasket for added grip in wet conditions
- Rugged, metal AquaConn connectors provide extreme durability where its needed most

AM-200 Aquameter can be used with both the AP-2000 and the AP-7000 Aquaprobes

